



Five new species and one new genus of recent miliolid foraminifera from Raja Ampat (West Papua, Indonesia)

Meena Förderer and Martin R. Langer

Steinmann Institut, Paleontology, University of Bonn, Bonn, NRW, Germany

ABSTRACT

Raja Ampat is an archipelago of about 1,500 small islands located northwest off the Bird's Head Peninsula of Indonesia's West Papua province. It is part of the Coral Triangle, a region recognized as the "epicenter" of tropical marine biodiversity. In the course of a large-scale survey on shallow benthic foraminifera we have discovered one new genus and five new species of recent miliolid benthic foraminifera from the highly diverse reefal and nearshore environments. The new fischerinid genus *Dentoplanispirinella* is characterized by its planispiral coiling and by the presence of a simple tooth, that differentiate it from *Planispirinella* Wiesner. It is represented in our sample material by the new species *Dentoplanispirinella occulta*. The other four species described herein are *Miliolinella moia*, *Miliolinella undina*, *Triloculina kaweia* and *Siphonaperta hallocki*. All new species are comparatively rare and occur sporadically in the sample material. Detailed morphological descriptions, scanning electron microscopy pictures of complete and dissected specimens as well as micro-computed tomography images are provided.

Subjects Biodiversity, Paleontology, Taxonomy

Keywords Foraminifera, Coral Triangle, Raja Ampat, Indonesia, Tropical reefs, Benthic, Protists

INTRODUCTION

The Raja Ampat Archipelago (West Papua, Indonesia) off the northwestern coast of New Guinea's Bird's Head Peninsula (Fig. 1B) is one of the most species rich marine environments (Erdmann & Pet, 2002; McKenna, Allen & Suryadi, 2002), situated in the Indo-Pacific's "epicenter" of biodiversity, commonly referred to as the Coral Triangle (Hoeksema, 2007). The Coral Triangle encompasses a large part of the tropical marine waters of Indonesia, the Philippines, Malaysia, the Solomon Islands, Papua New Guinea and Timor-Leste (Fig. 1A). It includes ecoregions that are each home to at least 500 species of hermatypic corals and also show extraordinary diversity among coral associated species (Veron, 1995; Veron et al., 2009; Roberts et al., 2002; Bellwood & Hughes, 2001; Tittensor et al., 2010). The region is recognized as a "species factory" and functions as the most significant net exporter of biodiversity for adjacent reef regions (Briggs & Bowen, 2013; Ekman, 1953).

Comprehensive studies on benthic foraminifera from the central Indo-Pacific region began with marine scientific expeditions in the late 1800s with the report on the Challenger Foraminifera by Brady (1884), and the work of Millett (1898–1904) from the Malay Archipelago. In the 20th century, systematic surveys were conducted around the Philippines

Submitted 27 February 2016

Accepted 31 May 2016

Published 23 June 2016

Corresponding author

Martin R. Langer,
martin.langer@uni-bonn.de

Academic editor

James Reimer

Additional Information and
Declarations can be found on
page 15

DOI 10.7717/peerj.2157

© Copyright
2016 Förderer and Langer

Distributed under
Creative Commons CC-BY 4.0

OPEN ACCESS

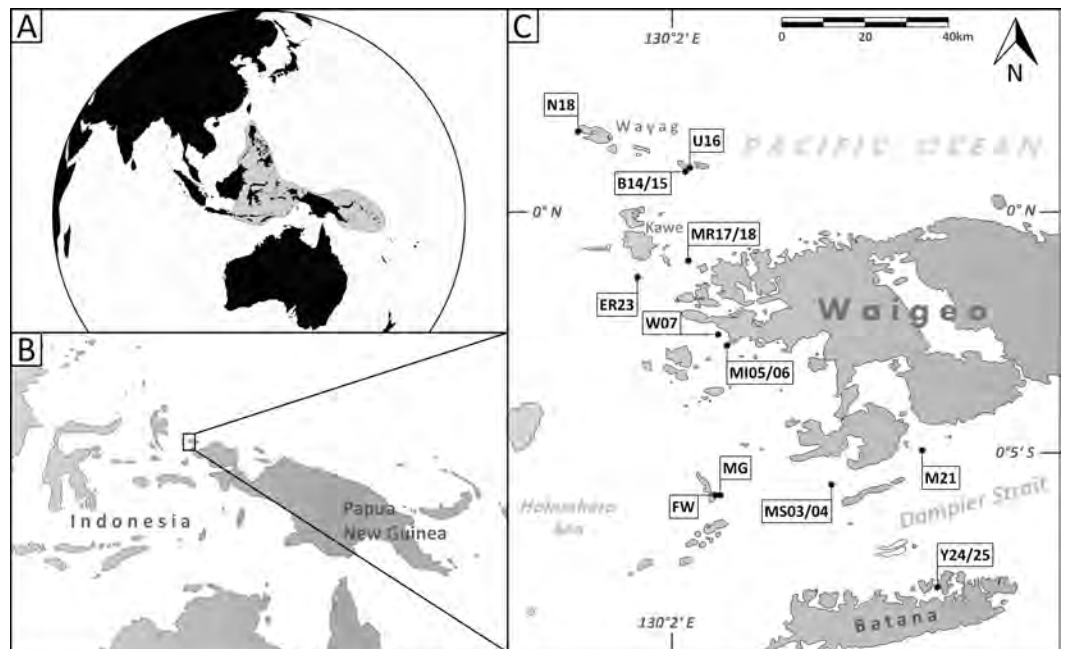


Figure 1 Maps of the sampling area. (A) Area of the Coral Triangle (shaded) in the Central Indo-Pacific; (B) location of Raja Ampat northwest of the Bird's Head Peninsula (West Papua, Indonesia); (C) location of sample stations where the species described herein occur (for details see Table 1).

(Cushman, 1921; Graham & Militante, 1959), in the Papuan Lagoon near Port Moresby, Papua New Guinea (Haig, 1988a; Haig, 1988b; Haig, 1993), in the Timor Sea and Sahul Shelf (Loeblich & Tappan, 1994), in Madang, eastern Papua New Guinea (Langer, 1992; Langer & Lipps, 2003) and more recently in the Ningaloo Reef area at Australia's northwest coast (Parker, 2009), at Chuuk Island of the Caroline reefs (Makled & Langer, 2011) and around New Caledonia (Debenay, 2012). Recent environmental and biogeographic studies on larger benthic foraminifera in the tropical waters of the central Indo-Pacific were conducted by Langer & Hottinger (2000), Renema (2003), Renema & Hohenegger (2005), Renema (2006), Renema (2010), Renema & Troelstra (2001), Hohenegger (2004), Hohenegger (2011), Weinmann *et al.* (2013) and Prazeres, Uthicke & Pandolfi (2016).

To date, however, large-scale systematic studies on benthic foraminifera from Raja Ampat are lacking. The archipelago consists of the four main islands Waigeo, Batana, Salawati, and Misool, and hundreds of small satellite islets, which are largely uninhabited. Due to its remote location and difficult access conditions the coral reefs of the region remained relatively unexplored and pristine. However, increasing exposure to exploitation have required the establishment of several marine protected areas (Agostini *et al.*, 2012). The first and to date only report on benthic foraminifera from Raja Ampat is that of Hofker (1927) and Hofker (1930), who examined the material taken by the Siboga Expedition (1899–1900) that included five samples from Raja Ampat. He documented nine species of benthic foraminifera including eight rotalid taxa and the miliolid symbiont bearing species *Peneroplis pertusus* (Forskål).

Table 1 Collection sites. Sample site information for collection locations from Raja Ampat (Indonesia) including environmental information on reefal habitat type.

Station	Depth (m)	Latitude	Longitude	Reef- or eco-type	Reef-zone
B14	41	0°5'22.40"N	130°13'35.29"E	Fringing reef	Fore-reef slope
B15	43	0°5'22.40"N	130°13'35.29"E	Fringing reef	Fore-reef slope
E23	24	0°16'25.87"S	130°18'59.19"E	Fringing reef	Fore-reef slope
FW	49	0°35'19.86"S	130°17'45.54"E	Fringing reef	Fore-reef slope
M21	27	0°29'50.40"S	130°43'37.62"E	Patch reef	Fore-reef slope
MG	18	0°35'23.40"S	130°18'54.54"E	Patch reef	Platform
MI05	32	0°16'25.87"S	130°18'59.19"E	Fringing reef	Fore-reef slope
MI06	32	0°16'25.87"S	130°18'59.19"E	Fringing reef	Fore-reef slope
MR17	12	0°5'47.58"S	130°14'9.66"E	Fringing reef	Fore-reef slope
MR18	18	0°5'47.58"S	130°14'9.66"E	Fringing reef	Fore-reef slope
MS03	16	0°34'47.88"S	130°32'32.04"E	Sand channel, sparse coral cover	Channel
MS04	14	0°34'47.88"S	130°32'32.04"E	Sand channel, sparse coral cover	Channel
N18	30	0°10'22.74"N	130°0'22.38"E	Fringing reef	Fore-reef slope
U16	45	0°5'49.13"N	130°13'59.08"E	Fringing reef	Fore-reef slope
W07	24	0°15'21.72"S	130°17'32.16"E	Fringing reef	Fore-reef slope
Y24	26	0°47'8.64"S	130°45'25.62"E	Fringing reef	Fore-reef slope
Y25	26	0°47'8.64"S	130°45'25.62"E	Fringing reef	Fore-reef slope

MATERIAL AND METHODS

This study was conducted with 30 sediment samples from the Raja Ampat Archipelago (New Guinea, Indonesia) from around the islands of Waigeo, Batana, Kawe, Fam and adjacent small islets in an area that covers about 2,500 km² (Fig. 1C). The archipelago is located in the central Indo-Pacific warm pool with an average annual sea surface temperature of 29 °C (Mangubhai *et al.*, 2012). Raja Ampat is further situated in the passage way of the Indonesian Throughflow, a major ocean current that leads water masses from the western Pacific to the eastern Indian Ocean. Previous studies have shown that the reef fauna of Raja Ampat is strongly current dependent (Devantier, Turak & Allen, 2009; Turak & Souhoka, 2003).

The samples were collected by snorkeling and SCUBA diving in September 2011 by M Langer. Sediment surface samples from the top 2 cm were collected from the fore-reef slope of fringing reefs, with two samples from a patch reef, and two samples from a sandy channel with sparse coral cover (Table 1). The sediment was predominantly carbonaceous (~ 90%) and included fine-grained sediments as well as coarse reef rubble. All samples were washed through a 63 µm sieve and dried at 50 °C in an oven overnight. Foraminifera were picked from each sample and the best preserved specimens were imaged using a Tescan VEGA MV2300 Scanning Electron Microscope (SEM) at the Steinmann Institute of the University of Bonn. Digital plates were assembled using Adobe Photoshop CS6. Micro-computer tomography (CT) scan imaging was conducted using a phoenix v|tome|x s computed tomography system at the Steinmann Institute and visualization was carried out with Avizo 7.1.0. The new species and the new genus are described in detail using the supra-generic classification of Loeblich & Tappan (1987).

Repository of the Material: the holotypes and topotypic paratypes of the new species are deposited in the micropaleontology collection of the Steinmann Institute of Paleontology at the University of Bonn, Germany (MaLaPNG 2011–10, MaLaPNG 2011–11, MaLaPNG 2011–12, MaLaPNG 2011–13, MaLaPNG 2011–14).

The electronic version of this article in Portable Document Format (PDF) will represent a published work according to the International Commission on Zoological Nomenclature (ICZN), and hence the new names contained in the electronic version are effectively published under that Code from the electronic edition alone. This published work and the nomenclatural acts it contains have been registered in ZooBank, the online registration system for the ICZN. The ZooBank LSIDs (Life Science Identifiers) can be resolved and the associated information viewed through any standard web browser by appending the LSID to the prefix <http://zoobank.org/>. The LSID for this publication is: urn:lsid:zoobank.org:pub:FB001C3C-AEA9-45D5-9224-EDD084378897. The online version of this work is archived and available from the following digital repositories: PeerJ, PubMed Central and CLOCKSS.

RESULTS

Smaller miliolid benthic foraminifera are typical dwellers in surface sediments of shallow water reefal and lagoonal habitats. By studying the highly diverse assemblages of benthic foraminifera from Raja Ampat, taken from different locations around the islands (Fig. 1C), we recorded a total of 455 species among them 249 miliolid species, of which five are described here as new. Four species belong to the widely distributed miliolid genera of *Miliolinella* Wiesner, *Triloculina* d'Orbigny and *Siphonaperta* Vella. As the morphological properties of the fifth species differentiate it from any previously known genera, we designate and describe it as the new genus *Dentoplanispirinella*.

SYSTEMATIC DESCRIPTIONS

Subclass Miliolana *Saidova, 1981*

Order Miliolida *Delage & Hérouard, 1896*

Suborder Miliolina *Delage & Hérouard, 1896*

Superfamily Cornuspiracea *Schultze, 1854*

Family Fischerinidae Millett, 1898

Subfamily Fischerininae Millett, 1898

Genus *Dentoplanispirinella* Förderer and Langer gen. nov.

urn:lsid:zoobank.org:act:98A1DD41-C0AE-4401-830B-0D189E70661A

Description. Test small, broadly circular in outline, discoidal to slightly biconvex. Periphery with a weakly developed subrounded keel that encircles the entire test margin. Wall thick, calcareous, porcelaneous, imperforate. Coiling involute, throughout planispirally enrolled with 2.5 to 3.5 tubular chambers per whorl, each whorl slightly offset to the proceeding coil with a tendency to become sigmoiline (axial section as seen in CT scan, Fig. 2H). Lateral wall extensions of the adult chambers entirely cover the earliest chambers and tend to

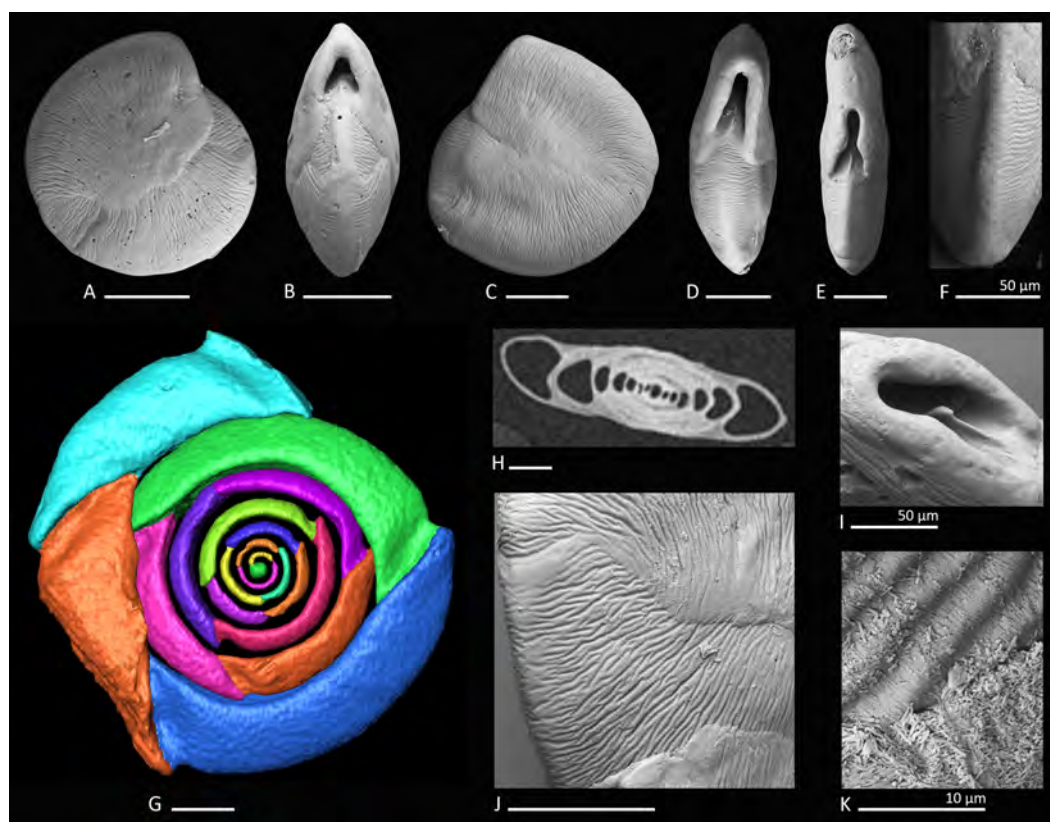


Figure 2 Holotype, paratype, CT scans and details of *Dentoplanispirinella* gen. nov. *occulta* sp. nov. (A) Side view and (B) apertural view of a more juvenile specimen with a nearly triangular aperture and weakly developed tooth (paratype); (C) side view and (D) apertural view (holotype); (E) apertural view of a specimen with a well-developed tooth and elongated aperture; (F) detail of a well-developed peripheral keel; (G) CT scan reconstruction of the chamber cavities revealing the presence of 2.5 – 3.5 chambers per whorl in an adult specimen (note that penultimate chamber is broken); (H) CT scan showing planispirally arranged chambers; (I) detail of an aperture with a very well-developed tooth; (J) detail of the striate surface ornamentation; (K) detail of the construction of the outer wall layer showing randomly arranged calcite needles in the lower part (test surface removed) and longitudinally arranged calcite needles on the outer test surface. Scale bar is 100 μm (unless indicated).

overlap the umbilical region in each whorl. Sutures oblique, thin and irregular. Aperture arch-shaped, triangular in juvenile specimens, high and subtriangular in adult specimens, tapering apically, on the base connected with the peripheral margin of the proceeding chamber and provided with a very small and thin tooth. In juvenile specimens the tooth appears just like a little knob or slightly raised spine.

Type species. *Dentoplanispirinella occulta* sp. nov.

Remarks. *Dentoplanispirinella* gen. nov. resembles *Planispirinella* Wiesner, 1931 in having a discoidal shape, a high aperture and a planispiral chamber arrangement, but differs from *Planispirinella* by the presence of a tooth and the more biconvex test shape in apical view (Fig. 2B). The apertural features and the coiling mode of *Dentoplanispirinella* further distinguish it from *Nummuloculina* Steinmann 1881, which has an apertural flap and an early quinqueloculine coiling.

Dentoplanispirinella occulta Förderer and Langer **sp. nov.**

Figures 2A–2K

urn:lsid:zoobank.org:act:7E132939-5284-484D-9B50-BC79A0B52D0A

Etymology. From the Latin “occultare” meaning for “hiding.”

Material. 28 specimens from nine samples (MR18, MI05, MI06, MS03, MS04, MG, M21, U16, Y24; Fig. 1C; Table 1), recent.

Holotype. The specimen illustrated here as Figs. 2C and 2D (sample MS03; MaLaPNG 2011–10).

Paratype. The specimen illustrated here as Figs. 2A and 2B (sample MS03; MaLaPNG 2011–10).

Type locality. The holotype and the paratype are from sample station MS03 (16m), a sand channel between Arborek Island and Pulau Mansuar; Raja Ampat, New Guinea (Indonesia).

Diagnosis. A species of *Dentoplanispirinella* gen. nov. with a discoidal to biconvex test shape, a slightly keeled periphery, a radial oriented, finely striate surface ornamentation and an arch-shaped, triangular aperture, provided with a small tooth.

Dimensions. Observed range of test dimensions: diameter 285–704 μm (lateral view), test width 100–193 μm (apertural view).

Occurrence. *Dentoplanispirinella occulta* is widely distributed in the Raja Ampat area in fine to coarse coral rubble samples from depths of 14 to 45 m.

Description. Test porcelaneous and imperforate. Almost circular in lateral view, lenticular and biconvex in apertural view with a slightly developed, subrounded keel and weakly inflated chambers. Coiling planispiral and involute. Two and a half to three and a half chambers visible from the exterior. Lateral wall extensions of the adult chambers entirely cover the earliest chambers and tend to overlap the umbilical region; the final chamber covers approximately half of the test surface. Sutures oblique, thin, irregular and recurved near the periphery. Test surface ornamented with radial oriented, fine, sub-parallel to anastomosing striae that are straight to slightly curved backwards, towards the outer margins of the chambers. Umbilical region and test periphery more weakly ornamented. Outer wall layer constructed of longitudinally aligned needle-shape crystals, oriented perpendicular to direction of ornamentation. The test appears matte white under the light microscope with a slightly translucent periphery. Apertural face not ornamented. Aperture arch-shaped and triangular in juvenile specimens, high and subtriangular in adult specimens, tapering apically, on the base connected with the peripheral margin to the preceding chamber and provided with a peristomal rim. Aperture provided with a very small and thin tooth, with the flat side oriented in lateral direction.

Remarks. *Dentoplanispirinella occulta* sp. nov. differs from *Planispirinella involuta* Collins (1958, p. 374, pl. 4, Figs. 2A and 2B) by its more lenticular biconvex shape in horizontal section, the subtriangular shape of the aperture, the presence of a small tooth, and the striate surface ornamentation.

Superfamily Miliolacea Ehrenberg, 1839

Family Hauerinidae Schwager, 1876

Subfamily Hauerininae Schwager, 1876

Genus *Miliolinella* (Wiesner, 1931)

Miliolinella moia Förderer and Langer sp. nov.

Figures 3A–3L

urn:lsid:zoobank.org:act:D8184E0C-2805-40D7-BCCB-492D74216168

Etymology. The new species is named after the indigeneous Moi people from Malaumkarta, a Papuan tribe from the north coast near Sorong.

Material. 11 specimens from six samples (B14, B15, E23, MR17, N18, U16; Fig. 1C; Table 1), recent.

Holotype. The specimen illustrated here as Figs. 3A–3C (sample B14; MaLaPNG 2011–11).

Paratypes. The specimens illustrated here as Figs. 3D–3F (sample B14), Figs. 3G–3I and Figs. 3J–3L (sample ER23; MaLaPNG 2011–11).

Type locality. The holotype and the paratype are from sample station B14 (41 m), Bag Island, east of Pulau Uranie; Raja Ampat, New Guinea (Indonesia).

Diagnosis. A slightly elongated, medium-sized species of *Miliolinella* Wiesner, 1931 with a compressed, angular and slightly slanted outline, a smooth and shiny wall, and a high subcircular opening.

Dimensions. Observed range of test dimensions: test height 409–554 μm , test width 278–396 μm (lateral view), 166–250 μm (apertural view).

Occurrence. This species is widely distributed in the Raja Ampat area in fine to coarse coral rubble samples and occurs at depths between 12 and 45 m.

Description. Test porcelaneous and imperforate, ovate in outline and slightly higher than broad. Test weakly compressed and flattened, subtriangular in apertural view. Chamber arrangement quinqueloculine with five chambers visible from the exterior. In some specimens only three to four chambers are visible. Periphery rounded to subrounded, chambers slightly inflated. Sutures curved, distinct and weakly depressed. Chambers tend to be off-centered, giving them a slanted appearance. Test wall smooth, translucent to opaque and glossy under the light microscope. Aboral end of the chambers slightly constricted. Aperture in basal position, a *Miliolinella*-type large subcircular opening with an everted peristomal rim and a semicircular, slightly excavated flap, that covers more than half of the opening.

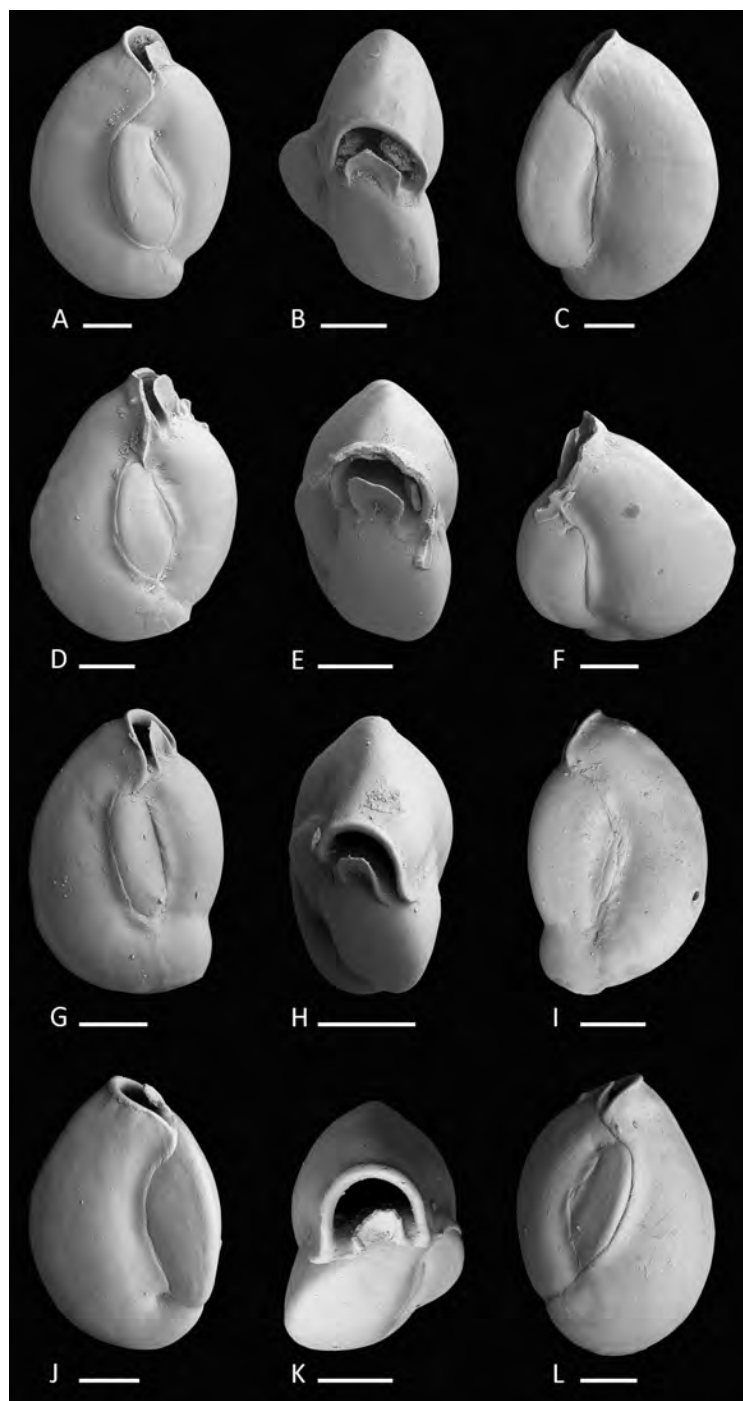


Figure 3 Holotype and paratypes of *Miliolinella moia* sp. nov. (A–C) Holotype, five chambers visible from the exterior: (A) lateral view of more evolute side; (B) top view; (C) lateral view of more involute side; (D–F) paratype, a specimen with a broken ultimate chamber showing three chambers visible from the exterior: (D) lateral view of more evolute side; (E) top view; (F) lateral view of more involute side; (G–I) a specimen with four chambers visible from the exterior: (G) lateral view of more evolute side; (H) top view; (I) lateral view of more involute side; (J–L) a specimen with four chambers visible from the exterior: (J) lateral view of more involute side; (K) top view; (L) lateral view of more evolute side. Scale bar is 100 μm .

Remarks. *Miliolinella moia* sp. nov. differs from *Miliolinella pilasensis* McCulloch, 1977 (p. 566, pl. 238, Fig. 16 and *Loeblich & Tappan*, 1994, p. 57, pl. 99, Figs. 1–9) in its angular and more compressed outline, and the large subcircular opening. Millet (1898) depicted a species of *Miliolina valvularis* (Reuss) from the Malay Archipelago (p. 11, Figs. 5A–5C) that shows a high degree of similarity to *Miliolinella moia*, but his specimen has a more rounded periphery. The original description of *Triloculina valvularis* by Reuss (1851, p. 85, pl. 7, Fig. 56) shows a specimen with a broadly rounded periphery and inflated chambers without angles. *Miliolinella* sp. 2 figured in Parker, 2009 from Ningaloo Reef, Australia (p. 128, Figs. 92A–92I, 93A–93J, 94A–94K) differs from *Miliolinella moia* by the low apertural opening and the broadly rounded and more inflated chambers.

Miliolinella undina Förderer and Langer sp. nov.

Figure 4A–4I

urn:lsid:zoobank.org:act:D11E1426-9DCC-41B8-A992-27D974A92520

1988a *Miliolinella* sp. B—Haig, Papuan Lagoon, Port Moresby, p. 224, pl. 2, Figs. 23 and 24.

1992 *Miliolinella* sp.—Hatta & Ujiié, Ryukyu Islands, p. 72, pl. 10, Fig. 6.

?2012 *Miliolinella* cf. *M. semicostata* (Wiesner)—Debenay, New Caledonia, p. 110, 275.

Etymology. After the undulate ornamentation of the test. From the Latin “unda” meaning wave and mythological “Undine,” a term established by the Renaissance alchemist Paracelsus for water spirits.

Material. Three specimens from three samples (MR18, N18, U16; Fig. 1C; Table 1), recent.

Holotype. The specimen illustrated here as Figs. 4A–4C (sample MR18; MaLaPNG 2011–12).

Paratypes. The specimens illustrated here as Figs. 4D–4F (sample N18) and Figs. 4G–4I (sample U16; MaLaPNG 2011–12).

Type locality. The holotype is from sample station MR18 (18 m), east of Kawe Island. The paratypes are from sample stations N18 (30 m), south-west coast of Pulau Wayag, and U16 (45 m), between Pulau Uranie and Bag Island; Raja Ampat, New Guinea (Indonesia).

Diagnosis. A small quinqueloculine species of *Miliolinella* Wiesner with inflated chambers, a rounded outline and an undulate to reticulate surface ornamentation.

Description. Test porcelaneous and imperforate, small, ratio of height and width variable but usually slightly higher than broad. Periphery rounded and chambers slightly inflated. Chamber arrangement quinqueloculine, with five chambers visible from the exterior. Aboral end rounded, flush with the surface in the holotype to slightly raised in paratypes. Wall smoothly finished, matte, translucent under the light microscope. Sutures curved and depressed. Test surface ornamented with numerous irregular, predominantly longitudinal, somehow honeycombed reticulate to undulate low anastomosing costae that are covering

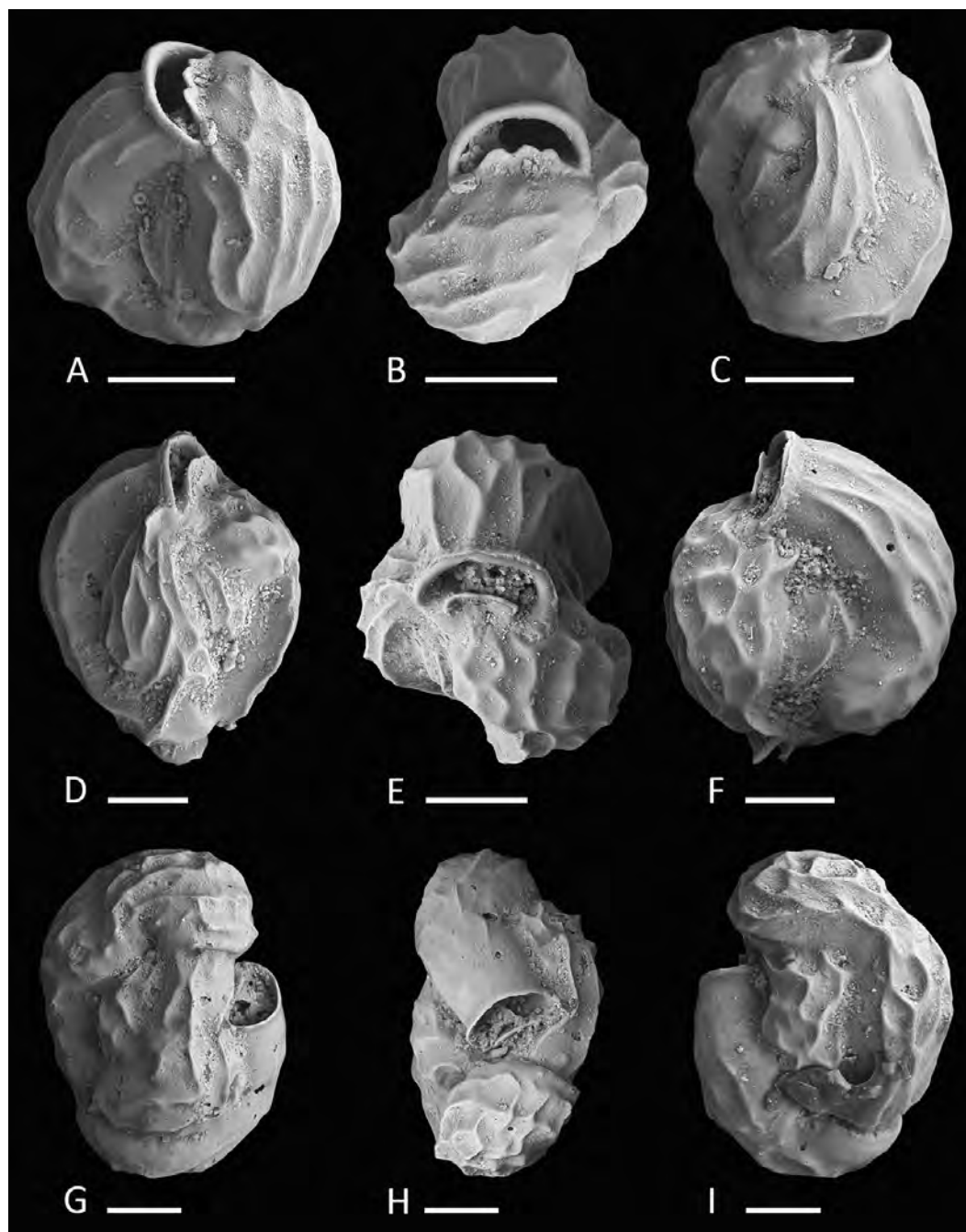


Figure 4 Holotype and paratypes of *Miliolinella undina* sp. nov. (A–C) Holotype: (A) oblique apertural view; (B) apertural view; (C) lateral view of more involute side; (D–F) a specimen with the final chamber missing: (D) lateral view of more evolute side; (E) top view; (F) lateral view of more involute side; (G–I) a specimen with an erratic growth stage in the final chambers: (G) side view; (H) top view; (I) lateral view of more involute side. Scale bar is 50 μ m.

large parts of the test. Outer-wall layer constructed of needle-shaped crystals that are primarily aligned in longitudinal direction. Aperture basal, a large semicircular *Miliolinella*-type opening, provided with a thickened and everted peristomal rim and a broad, slightly excavated basal flap.

Dimensions. Observed range of test dimensions: test height 146–162 μm , test width 114–224 μm (lateral view), 81–119 μm (apertural view).

Occurrence. *Miliolinella undina* is present with one specimen in each of three highly diverse, miliolid-rich, fine coral rubble samples from depths of 18 to 45 m.

Remarks. Specimens of *Miliolinella undina* sp. nov. have been previously documented by Haig, 1988a as *Miliolinella* sp. B from the Papuan Lagoon, Port Moresby and by Hatta & Ujié, 1992 as *Miliolinella* sp. from the Ryukyus. Hatta & Ujié mentioned the species to occur rarely in their assemblages. The new species has also been recorded in samples from northern Palawan (M Förderer, 2016, unpublished data). *Miliolinella* cf. *M. semicostata* (Wiesner) depicted by Debenay from New Caledonia (2012, p. 110, 275) may also belong to *Miliolinella undina*, but shows a less undulated test ornamentation. Test shape, apertural and ornamental features are more similar to our holotype (Figs. 4A–4C) than to *Miliolinella semicostata* (Wiesner, 1923) from the Mediterranean Sea (see Cimerman & Langer, 1991, p. 42, pl. 38, Figs. 10–15). *Miliolinella semicostata* has less inflated chambers and the ornamentation is not reticulate but longitudinally striate and restricted to the angles. *Miliolinella undina* also resembles *Miliolinella* sp. 4 depicted by Parker from the Ningaloo Reef in Western Australia (2009, p. 136, Figs. 97A–97H), but his specimen has a less undulated and more striate alignment of costae. The new species also resembles *Miliolinella flintiana* (Cushman, 1932) (p. 55, pl. 12: 4A–4C) in size, test shape, chamber arrangement and apertural features. However it differs in its surface ornamentation, that is distinctly longitudinal costate in *Miliolinella flintiana* and undulate and more irregular in *Miliolinella undina*. *Miliolinella flintiana* also occurs in our assemblages.

Genus *Triloculina* D’Orbigny, 1826

Triloculina kawea Förderer and Langer sp. nov.

Figs. 5A–5H

urn:lsid:zoobank.org:act:6F5B38CE-88B3-4FBE-9329-8483756158E1

2009 *Triloculina*? sp. 2—Parker, Ningaloo Reef, p. 372, Figs. 271F–271J.

Etymology. This species is named in honor of the indigeneous people of West Papua after the Kawe tribe, that owns and protects a highly diverse marine protected area of Raja Ampat.

Material. 12 specimens from seven samples (B15, FW, M05, MS04, N18, U16, Y25; Fig. 1C; Table 1), recent.

Holotype. The specimen illustrated here as Figs. 5A–5C (sample FW; MaLaPNG 2011–13).

Paratype. The specimen illustrated here as Figs. 5E–5G (sample FW; MaLaPNG 2011–13).

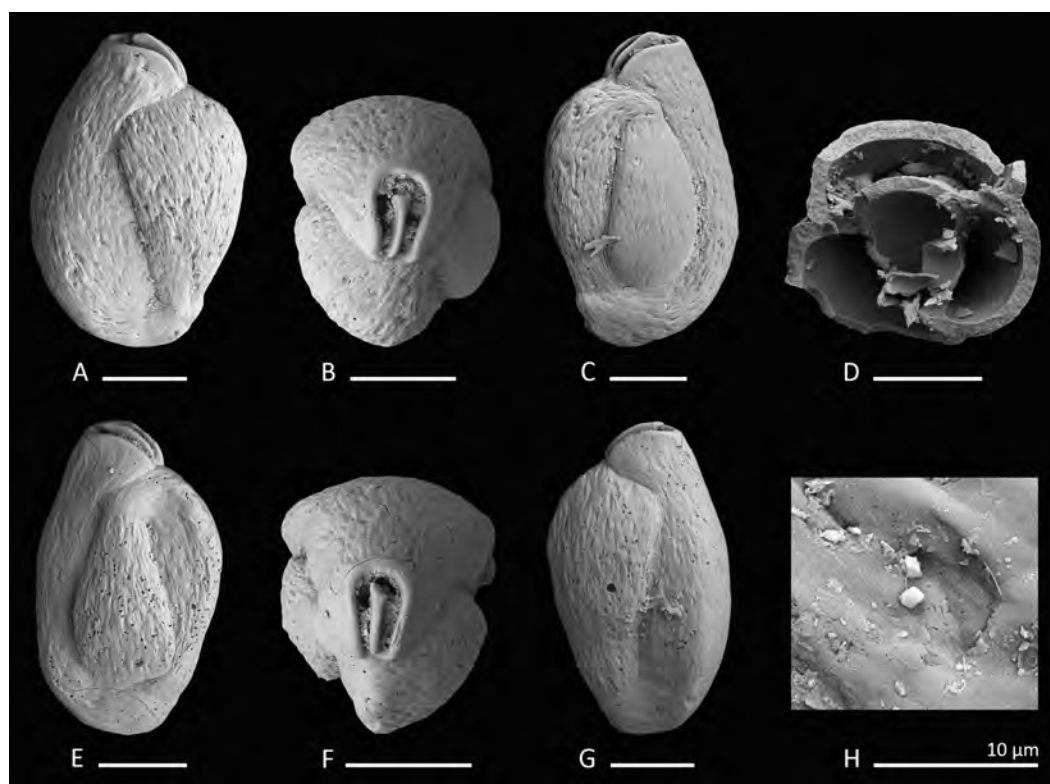


Figure 5 Holotype, paratype, cross section and detail of *Triloculina kawea* sp. nov. (A–C) Holotype: (A) lateral view of more involute side; (B) apertural view; (C) lateral view of more evolute side; (D) cross section of a specimen; (E–G) Paratype: (E) lateral view of more evolute side; (F) apertural view; (G) lateral view of more involute side; (H) detail of the irregular test surface. Scale bar is 100 μm (unless indicated).

Type locality. The holotype and the paratype are from sample station FW (49 m), south-east Penemu, Fam Islands; Raja Ampat, New Guinea (Indonesia).

Diagnosis. A medium-sized species of *Triloculina* d’Orbigny with a slightly elevated “*Lachlanella*”-type aperture, rounded periphery, blunt angles and a roughly textured wall.

Dimensions. Observed range of test dimensions: test height 377–439 μm , test width 200–245 μm (lateral view), 162–195 μm (apertural view).

Occurrence. This species is widely distributed in our sampling area in fine to coarse coral rubble samples from depths of 14 to 49 m.

Description. Test porcelaneous and imperforate, about one and a half times longer than broad. Broadly triangular in apertural view, ovate in outline. Chamber arrangement triloculine, periphery rounded to subrounded, chambers inflated with blunt angles. Sutures distinct and depressed. Surface ornamented with elongated, irregular longitudinal arranged short striae covering the entire test surface, giving the appearance of a matte and roughly textured wall under the light microscope. Outer wall layer consisting of longitudinally aligned plate shaped crystals. Aboral end rounded and slightly produced, oral end produced and connected with the peripheral margin of the preceding chamber. Aperture basal, “*Lachlanella*”-type with a long slender tooth that becomes thickened at the tip.

Remarks. The species *Triloculina?* sp. 2 reported by [Parker, 2009](#) from Western Australia differs from *Triloculina kawea* sp. nov. in its less triangular shape and less elongated outline. We consider Parker's specimen a juvenile individual of *Triloculina kawea*. The aperture of Parker's specimen is not intact but resembles very well the apertural features of *Triloculina kawea*. The outer wall layer appears identical ([Fig. 5H](#)). Parker mentioned the species to be possibly cryptoquineloculine. [Figures 5B and 5F](#) and the horizontal section (5D) show the triloculine chamber arrangement. *Triloculina* sp. 1, reported by [Debenay 2012](#) from New Caledonia (p. 139, 278) is very similar in shape and surface ornamentation to *Triloculina kawea*, but has significantly more acute angles and a Y-shaped tooth. *Triloculina kawea* further differs from *Triloculina linneiana* d'Orbigny depicted by [Baccaert, 1987](#) from the Great Barrier Reef (p. 128, pl. 57, Figs. 3 and 4) in the less striate ornamentation and more acute angles.

Subfamily Siphonapertinae [Saidova, 1975](#)

Genus *Siphonaperta* [Vella, 1957](#)

Siphonaperta hallocki Förderer and Langer **sp. nov.**

[Figs. 6A–6F](#)

urn:lsid:zoobank.org:act:DD4F0DB3-1355-4BB1-841A-FFE32E0F6455

?1988a *Quinqueloculina* sp. C—[Haig, Papuan Lagoon, Port Moresby, p. 234, pl. 9, Figs. 7–10.](#)

?2009 *Quinqueloculina* sp. 13—[Parker, Ningaloo Reef, p. 311, Figs. 224A–224J, 225A–225G.](#)

Etymology. In honor of Pamela Hallock Muller for her extensive work on tropical foraminifera.

Material. Four specimens from three samples (MS03, N18, W07; [Fig. 1C](#); [Table 1](#)), recent.

Holotype. The specimen illustrated here as [Figs. 6A–6C](#) (sample MS03; MaLaPNG 2011–14).

Paratype. The specimen illustrated here as [Figs. 6D–6F](#) (sample N18; MaLaPNG 2011–14).

Type locality. The holotype is from sample station MS03 (18 m), a sand channel between Arborek Island and Pulau Mansuar. The paratype is from sample station N18 (30 m), south-west coast of Pulau Wayag; Raja Ampat, New Guinea (Indonesia).

Diagnosis. A medium-sized species of *Siphonaperta* Vella with a finely agglutinated wall, carinate shoulders, a short neck and a circular aperture with a small bifid tooth.

Description. Test porcelaneous and imperforate, medium-sized, about two times longer than broad, and ovate in outline. Outer layer of the calcareous test wall covered with finely agglutinated mostly biogenic grains. Agglutinated grains are particularly frequent along the sutures. Periphery carinate to subacute. Chamber arrangement quinqueloculine with five chambers visible from the exterior. Sutures slightly curved, incised and depressed. Chambers weakly inflated and angular in section, with weakly developed longitudinal striae

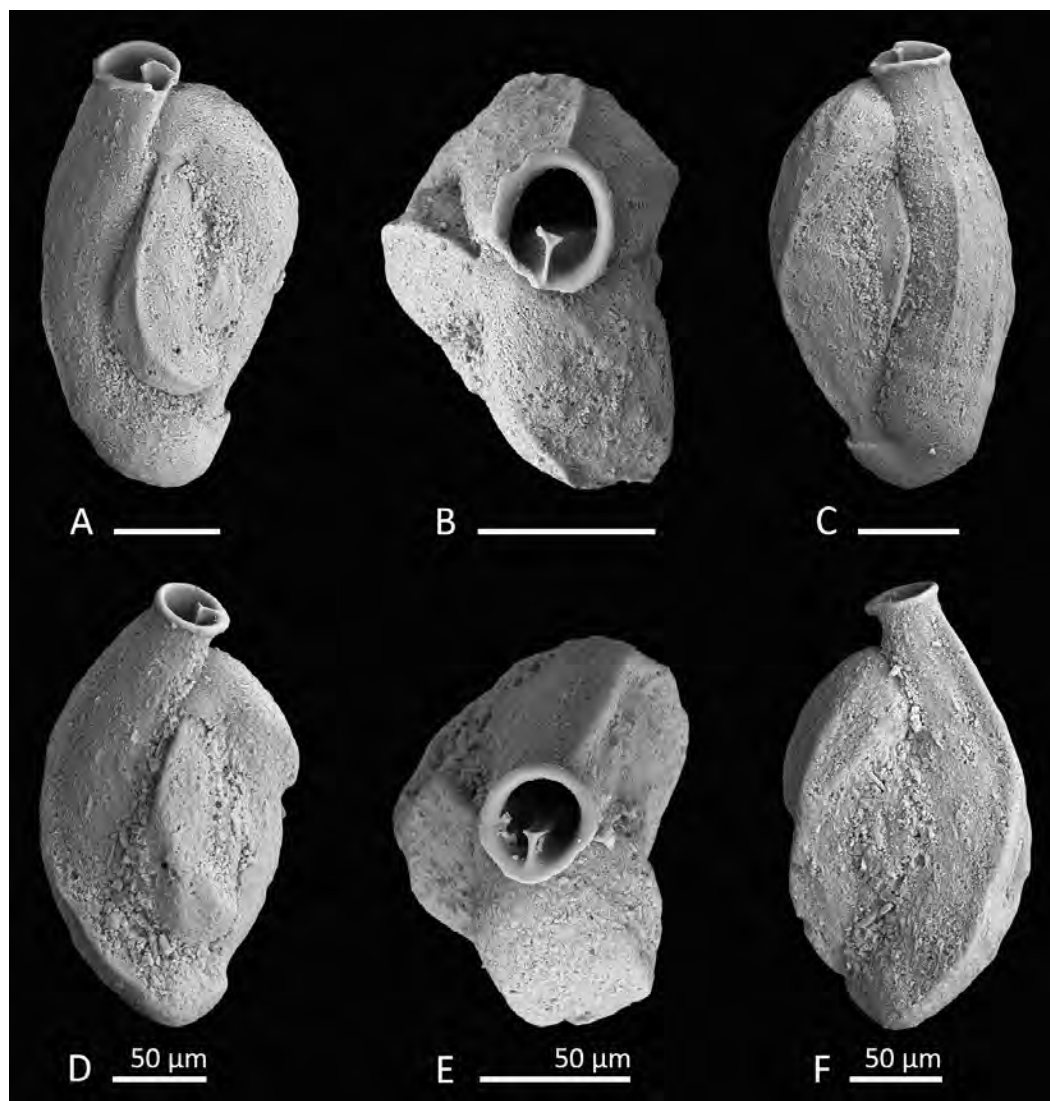


Figure 6 Holotype and paratype of *Siphonaperta hallocki* sp. nov. (A–C) Holotype: (A) lateral view of more evolute side; (B) apertural view; (C) lateral view of more involute side; (D–F) paratype: (D) lateral view of more evolute side; (E) apertural view; (F) lateral view of more involute side. Scale bar is 100 μm (unless indicated).

(in well preserved specimens). Aboral end rounded and produced; oral end becoming more slender and leading into a short produced neck. Aperture terminal, a wide circular opening with a short T-shaped, bifid tooth, that reaches more than one third of the apertural diameter. Apertural opening surrounded by a slightly thickened and everted peristomal rim.

Dimensions. Observed range of test dimensions: test height 240–442 μm , test width 132–233 μm (lateral view), 87–119 μm (apertural view).

Occurrence. *Siphonaperta hallocki* occurs sporadically in fine to coarse coral rubble samples from depths of 16 to 30 m.

Remarks. Very similar specimens were previously documented as *Quinqueloculina* sp. C from the Papuan Lagoon (Haig, 1988a) and *Quinqueloculina* sp. 13 from Ningaloo Reef (Parker, 2009). Test shape, wall texture and apertural features appear to be identical to our specimens from Raja Ampat. *Quinqueloculina* sp. 4 documented by Parker, 2009 from the Ningaloo Reef appears very similar to *Siphonaperta hallocki*, but differs in its more elongated shape, more rounded and inflated chambers and the cryptoquinqueloculine coiling. In addition, Parker describes the wall as roughly textured with some agglutinated grains. *Quinqueloculina tropicalis* Cushman from Samoa (1924, p. 63, pl. 23, Figs. 9 and 10) differs from our new species by its more compressed shape and more elongated broadly rounded chambers without any angles or costae. *Quinqueloculina polygona* D'Orbigny (1839, p. 198, pl. 12, Figs. 21–23) differs from *Siphonaperta hallocki* in its smooth and shiny surface, the pronounced carinae and the less inflated chambers. Langer et al., 2013 depicted a specimen of *Quinqueloculina polygona* d'Orbigny from Bazaruto (Langer et al., 2013, p. 163, Fig. 5: 14) that resembles our new species in size, shape and apertural features. However, it is unlikely that this species from Bazaruto belongs to *Siphonaperta hallocki*, as its outer wall layer is not agglutinated.

ACKNOWLEDGEMENTS

The authors gratefully acknowledge Dr. Stephanie Pietsch for assistance with the collection of the samples, Georg Oleschinski for help with the SEM and Peter Göddertz and Kai Jäger for support with CT scan imaging. We thank Justin H. Parker, Tomas Cedhagen and an anonymous reviewer for constructive and helpful comments on the manuscript.

ADDITIONAL INFORMATION AND DECLARATIONS

Funding

Collection and study of the material was supported by grants from the German Science Foundation (La-884/10-1/13- 1) and the University of Bonn. The funders had no role in study design, data collection and analysis, decision to publish, or preparation of the manuscript.

Grant Disclosures

The following grant information was disclosed by the authors:
German Science Foundation: La-884/10-1/13-1.
University of Bonn.

Competing Interests

The authors declare there are no competing interests.

Author Contributions

- Meena Förderer performed the experiments, analyzed the data, contributed reagents/materials/analysis tools, wrote the paper, prepared figures and/or tables, reviewed drafts of the paper.

- Martin R. Langer conceived and designed the experiments, performed the experiments, analyzed the data, contributed reagents/materials/analysis tools, wrote the paper, reviewed drafts of the paper.

Data Availability

The following information was supplied regarding data availability:

- 1) Micropaleontological Collection Steinmann Institute of Paleontology at the University of Bonn, Germany
- 2) MaLaPNG 2011-10, MaLaPNG 2011-11, MaLaPNG 2011-12, MaLaPNG 2011-13, MaLaPNG 2011-14.

New Species Registration

The following information was supplied regarding the registration of a newly described species:

Dentoplanispirinella gen. nov. urn:lsid:zoobank.org:act:98A1DD41-C0AE-4401-830B-0D189E70661A

Dentoplanispirinella occulta sp. nov.

urn:lsid:zoobank.org:act:7E132939-5284-484D-9B50-BC79A0B52D0A

Miliolinella moia sp. nov.

urn:lsid:zoobank.org:act:D8184E0C-2805-40D7-BCCB-492D74216168

Miliolinella undina sp. nov.

urn:lsid:zoobank.org:act:D11E1426-9DCC-41B8-A992-27D974A92520

Triloculina kawea sp. nov.

urn:lsid:zoobank.org:act:6F5B38CE-88B3-4FBE-9329-8483756158E1

Siphonaperta hallocki sp. nov.

urn:lsid:zoobank.org:act:DD4F0DB3-1355-4BB1-841A-FFE32E0F6455

The LSID for this publication is: urn:lsid:zoobank.org:pub:FB001C3C-AEA9-45D5-9224-EDD084378897.

REFERENCES

- Agostini VN, Grantham HS, Wilson J, Mangubhai S, Rotinsulu C, Hidayat N, Muljadi A, Muhajir, Mongdong M, Darmawan A, Rumetna L, Erdmann MV, Possingham HP. 2012.** *Achieving fisheries and conservation objectives within marine protected areas: zoning the Raja Ampat network.* Indo-Pacific Division, Denpasar: The Nature Conservancy Report No 2/12. Available at https://www.conservationgateway.org/Documents/Agostini%20etal12_Raja%20Ampat%20Zoning%20REPORT.pdf (accessed 24 February 2016).
- Baccaert J. 1987.** Distribution patterns and taxonomy of benthic foraminifera in the Lizard Island reef complex, northern great barrier reef, Australia. PhD thesis, Université de Liège.
- Bellwood DR, Hughes TP. 2001.** Regional-scale assembly rules and biodiversity of coral reefs. *Science* **292**:1532–1534 DOI [10.1126/science.1058635](https://doi.org/10.1126/science.1058635).

- Brady HB. 1884.** Report on the foraminifera dredged by H.M.S. Challenger during the years 1873–1876. *Reports of the Scientific Results of the Voyage of H. M. S. Challenger, Zoology* **9**:1–814.
- Briggs JC, Bowen BW. 2013.** Marine shelf habitat: biogeography and evolution. *Journal of Biogeography* **40**:1023–1035. DOI [10.1111/jbi.12082](https://doi.org/10.1111/jbi.12082).
- Cimerman F, Langer MR. 1991.** *Mediterranean Foraminifera*. Ljubljana: Slovenska akademija znanosti in umetnosti. Academia Scientiarum et Artium Slovencia Classis IV: Historia Naturalis.
- Collins AC. 1958.** Foraminifera. In: *Great Barrier Reef Expedition 1928–1929. British Museum of Natural History Scientific reports*, vol. 6. London: British Museum (Natural History), 335–437.
- Cushman JA. 1921.** Foraminifera of the Philippine and adjacent seas. *Bulletin of the United States National Museum* **100**(4):1–608.
- Cushman JA. 1924.** Samoan foraminifera. In: *Department of marine biology of the Carnegie Institution of Washington*. Vol. XXI. Washington, D.C.: Carnegie Institute of Washington, 1–85.
- Cushman JA. 1932.** The foraminifera of the tropical Pacific collections of the “Albatross,” 1899–1900. Part 1. Astrorhizidae to Trochamminidae. *Bulletin of the United States National Museum* **161**:1–88.
- Debenay JP. 2012.** *A Guide to 1,000 Foraminifera from Southwestern Pacific, New Caledonia*. Paris: Editions IRD Marseille/Publications Scientifiques du Muséum.
- Delage Y, Hérouard E. 1896.** *Traité de Zoologie Concrète, La Cellule et les Protozoaires*. Vol. 1. Paris: Schleicher Frères.
- Devantier L, Turak E, Allen G. 2009.** Reef-scapes, reef habitats and coral communities of Raja Ampat, Birds’s Head Seascape, Papua, Indonesia. Report to The Nature Conservancy, Bali, Indonesia.
- D’Orbigny A. 1826.** Tableau méthodique de la classe des Céphalopodes. *Annales des Sciences Naturelles* **7**:245–314.
- D’Orbigny A. 1839.** Foraminifères. In: Ramon de la Sagra, ed. *Histoire physique, politique et naturelle de l’île de Cuba*. Paris: Arthus Bertrand, 1–224.
- Ehrenberg CG. 1839.** Über die Bildung der Kreidefelsen und des Kreidemergels durch unsichtbare Organismen. *Physikalische Abhandlungen der Königlichen Akademie der Wissenschaften zu Berlin, 1838 [1840: separate 1839]*. Berlin: Königlichen Akademie der Wissenschaften, 59–147.
- Ekman S. 1953.** *Zoogeography of the sea*. London: Sidgwick and Jackson.
- Erdmann MV, Pet JS. 2002.** A rapid marine survey of the northern Raja Ampat islands (Eastern Indonesia). Report from Henry Foundation/The Nature Conservancy/N-RM/EPIQ, 36 pp, The Nature Conservancy. Available at <http://www.rajaampat.org/downloads/Raja4%20trip%20report.pdf> (accessed 24 February 2016).
- Graham JJ, Militante PJ. 1959.** Recent foraminifera from the Puerto Galera Area, northern Mindoro, Philippines. *Stanford University Publications, Geological Sciences* **6**:1–171.

- Haig DW. 1988a.** Miliolid foraminifera from the inner neritic sand and mud facies of the Papuan Lagoon, New Guinea. *Journal of Foraminiferal Research* **18**:203–236 DOI [10.2113/gsjfr.18.3.203](https://doi.org/10.2113/gsjfr.18.3.203).
- Haig DW. 1988b.** Distribution of miliolid foraminifera in marine sediments around Motupore Island, Papua New Guinea. *Science in New Guinea* **14**:54–94.
- Haig DW. 1993.** Buliminid foraminifera from inner neritic and mud facies of the Papuan Lagoon. *Journal of Foraminiferal Research* **23**:162–179 DOI [10.2113/gsjfr.23.3.162](https://doi.org/10.2113/gsjfr.23.3.162).
- Hatta A, Ujiie H. 1992.** Benthic foraminifera from coral seas between Ishigaki and Iriomote Islands, Southern Ryukyu Island Arc, Northwestern Pacific. part 1. Systematic descriptions of textulariina and Miliolina. *Bulletin of the College of Science, University of Ryukyus* **53**:49–119.
- Hoeksema BW. 2007.** Delineation of the Indo-Malayan centre of maximum marine biodiversity: the Coral Triangle. In: Renema W, ed. *Biogeography, Time, and Place: Distributions, Barriers, and Islands*. Dordrecht: Springer, 117–178.
- Hofker J. 1927.** The foraminifera of the Siboga Expedition. Part 1. Families Tinoporidae, Rotaliidae, Nummulitidae, Amphisteginidae. *Siboga Expeditie, Monographie IVa*. Leiden: E. J. Brill, 1–78.
- Hofker J. 1930.** The foraminifera of the Siboga Expedition. Part 2. Families Astorhizidae, Rhizamminidae, Reophacidae, Anomalinidae, Peneroplidae. *Siboga Expeditie, Monographie IVa*. Leiden: E. J. Brill, 79–170.
- Hohenegger J. 2004.** Depth coenoclines and environmental considerations of Western Pacific larger foraminifera. *Journal of Foraminiferal Research* **34**:9–33 DOI [10.2113/0340009](https://doi.org/10.2113/0340009).
- Hohenegger J. 2011.** *Large Foraminifera—Greenhouse constructions and gardeners in the oceanic microcosm*. Kagoshima: Kagoshima University Museum.
- Langer MR. 1992.** New recent foraminiferal genera and species from the lagoon at Madang, Papua New Guinea. *Journal of Micropaleontology* **11**:85–93 DOI [10.1144/jm.11.1.85](https://doi.org/10.1144/jm.11.1.85).
- Langer MR, Hottinger L. 2000.** Biogeography of selected “larger” foraminifera. Biology of Foraminifera. *Micropaleontology* **46 Suppl.1**:105–126.
- Langer MR, Lipps JH. 2003.** Foraminiferal distribution and diversity, Madang Reef and Lagoon, Papua New Guinea. *Coral Reefs* **22**:143–154 DOI [10.1007/s00338-003-0298-1](https://doi.org/10.1007/s00338-003-0298-1).
- Langer MR, Thissen JM, Makled WA, Weinmann AE. 2013.** The foraminifera from the Bazaruto Archipelago (Mozambique). *Neues Jahrbuch für Geologie und Paläontologie. Abhandlungen Band* **267/2**:155–170 DOI [10.1127/0077-7749/2013/0302](https://doi.org/10.1127/0077-7749/2013/0302).
- Loeblich AR, Tappan H. 1987.** *Foraminiferal genera and their classification*. New York: Springer Verlag.
- Loeblich AR, Tappan H. 1994.** Foraminifera of the Sahul Shelf and Timor Sea. *Cushman Foundation for Foraminiferal Research* **31**:1–661.
- Makled WA, Langer MR. 2011.** Benthic foraminifera from the Chuuk Lagoon atoll system (Caroline Islands, Pacific Ocean). *Neues Jahrbuch für Geologie und Paläontologie. Abhandlungen Band* **259**:231–249 DOI [10.1127/0077-7749/2011/0119](https://doi.org/10.1127/0077-7749/2011/0119).

- Mangubhai S, Erdmann MV, Wilson JR, Huffard CL, Ballamu F, Hidayat NI, Hitipeuw C, Lazuardi ME, Muhajir, Pada D, Purba G, Rotinsulu C, Rumetna L, Sumolang K, Wen W. 2012.** Papuan Bird's Head Seascape: emerging threats and challenges in the global center of marine biodiversity. *Marine Pollution Bulletin* **64**:2279–2295 DOI [10.1016/j.marpolbul.2012.07.024](https://doi.org/10.1016/j.marpolbul.2012.07.024).
- McCulloch I. 1977.** *Qualitative observations on recent foraminiferal tests with emphasis on the eastern Pacific: parts I, II, III*. Los Angeles: University of Southern California.
- McKenna S, Allen G, Suryadi S (eds.) 2002.** A marine rapid assessment of the Raja Ampat Islands, Papua Province, Indonesia. In: *RAP Bulletin of Biological Assessment*, Vol. 22. Washington, D.C.: Conservation International Available at http://www.conservation.org/publications/Documents/RAP_Reports/RAP22_Raja_Ampat_Indonesia_Apr-2002.pdf (accessed 24 February 2016).
- Millett FW. 1898–1904.** Report on the recent Foraminifera of the Malay Archipelago contained in anchor-mud collected by Mr. A. Durrand, F. R. M. S. Parts I–XVII. *Journal of Royal Microscopical Society* **1898**:258–269 (Part I), 499–513 (Part II), 607–614 (Part III); 1899:249–255 (Part IV), 357–365 (Part V), 557–564 (Part VI); 1900:6–13 (Part VII), 273–281 (Part VIII), 539–549 (Part IX); 1901:1–11 (Part X), 485–497 (Part XI), 619–628 (Part XII); 1902:509–528 (Part XIII); 1903:253–275 (Part XIV), 685–704 (Part XV); 1904, 489–506 (Part XVI), 597–609 (Part XVII).
- Parker J. 2009.** Taxonomy of foraminifera from Ningaloo Reef, Western Australia. *Memoirs of the Association of Australasian Paleontologists* **36**:1–810.
- Prazeres M, Uthicke S, Pandolfi JM. 2016.** Influence of local habitat on the physiological responses of large benthic foraminifera to temperature and nutrient stress. *Scientific Reports* **6**: 21936 DOI [10.1038/srep21936](https://doi.org/10.1038/srep21936).
- Renema W. 2003.** Larger foraminifera on reefs around Bali (Indonesia). *Zoologische Verhandelingen* **345**:337–366.
- Renema W. 2006.** Large benthic foraminifera from the deep photic zone of a mixed siliciclastic-carbonate shelf off East Kalimantan, Indonesia. *Marine Micropaleontology* **58**:73–82 DOI [10.1016/j.marmicro.2005.10.004](https://doi.org/10.1016/j.marmicro.2005.10.004).
- Renema W. 2010.** Is increased calcarinid (foraminifera) abundance indicating a larger role for macro-algae in Indonesian Plio-Pleistocene coral reefs? *Coral Reefs* **29**:165–173 DOI [10.1007/s00338-009-0568-7](https://doi.org/10.1007/s00338-009-0568-7).
- Renema W, Hohenegger J. 2005.** On the identity of *Calcarina spengleri* (Gmelin, 1791). *Journal of Foraminiferal Research* **35**:15–21 DOI [10.2113/35.1.15](https://doi.org/10.2113/35.1.15).
- Renema W, Troelstra SR. 2001.** Larger foraminifera distribution on a mesotrophic carbonate shelf in SWSulawesi (Indonesia). *Palaeogeography, Palaeoclimatology, Palaeoecology* **175**:125–147 DOI [10.1016/S0031-0182\(01\)00389-3](https://doi.org/10.1016/S0031-0182(01)00389-3).
- Reuss AE. 1851.** Ueber die fossilen Foraminiferen und Entomostraceen der Septharienthone der Umgegend von Berlin. *Zeitschrift der Deutschen Geologischen Gesellschaft* **3**:49–91.

- Roberts CM, McClean CJ, Veron J, Hawkins JP, Allen GR, McAllister DE, Mittermeier CG, Schueler FW, Spalding M, Wells F, Vynne C, Werner TB. 2002.** Marine biodiversity hotspots and conservation priorities for tropical reefs. *Science* **295**:1280–1284 DOI [10.1126/science.1067728](https://doi.org/10.1126/science.1067728).
- Saidova KM. 1975.** *Bentosnye Foraminifery Tikhogo Okeana [Benthonic foraminifera of the Pacific Ocean]*, Vol. 3. Moscow: Institut Okeanologii P. P. Shirshova, Akademiya Nauk SSSR.
- Saidova KM. 1981.** *O sovremennom sostoyanii sistemy nadvidovykh taksonov Kaynozoyksikh bentosnykh foraminifer [On an up-to-date system of supraspecific taxonomy of Cenozoic benthonic foraminifera]*. Moscow: Institut Okeanologii P. P. Shirshova, Akademiya Nauk SSSR.
- Schultze MS. 1854.** *Über den Organismus der Polythalamien (Foraminiferen), nebst Bemerkungen über die Rhizopoden im Allgemeinen*. Leipzig: Wilhelm Engelmann.
- Schwager C. 1876.** Saggio di una classificazione dei foraminiferi avuto riguardo alle loro famiglie naturali. *Bolletino R. Comitato Geologico d'Italia* **7**:475–485.
- Tittensor DP, Mora C, Jetz W, Lotze HK, Ricard D, Vanden Berge E, Worm B. 2010.** Global patterns and predictors of marine biodiversity across taxa. *Nature* **466**:1098–1011 DOI [10.1038/nature09329](https://doi.org/10.1038/nature09329).
- Turak E, Souhoka J. 2003.** Coral diversity and the status of coral reefs in the Raja Ampat Islands. In: Donnelly R, Neville D, Mous P, eds. *Report on a rapid ecological assessment of the Raja Ampat Islands, Papua, Eastern Indonesia, held October 30–November 22, 2002*. Available at <http://www.rajaampat.org/downloads/RajaAmpatREAFinalDraft%20Screen.pdf> (accessed 24 February 2016).
- Vella P. 1957.** Studies in New Zealand foraminifera. *Paleontological Bulletin, Wellington* **28**:1–64.
- Veron JEN. 1995.** *Corals in space and time: the biogeography and evolution of the Scleractinia*. Ithaca: Cornell University Press.
- Veron JEN, DeVantier LM, Turak E, Green AL, Kininmonth S, Stafford-Smith M, Peterson N. 2009.** Delineating the Coral Triangle. *Galaxea, Journal of Coral Reef Studies* **11**:91–100.
- Weinmann AE, Rödder D, Lötters S, Langer MR. 2013.** Heading for new shores: Projecting marine distribution ranges of selected larger foraminifera. *PLoS ONE* **8**(4):e62182 DOI [10.1371/journal.pone.0062182](https://doi.org/10.1371/journal.pone.0062182).
- Wiesner H. 1923.** *Die Milioliden der östlichen Adria*. Prag-Bubenec.
- Wiesner H. 1931.** Die foraminiferen der deutschen Südpolar Expedition 1901–1903. *Deutsche Südpolar Expedition, Berlin (Zoology)* **20**:53–165.